



GCE AS/A level

1202/01

GEOGRAPHY – G2
Changing Human Environments

A.M. TUESDAY, 21 May 2013

1 ½ hours

ADDITIONAL MATERIALS

In addition to this examination paper, you will need **one** 12 page answer book.

INSTRUCTIONS TO CANDIDATES

Use black ink or black ball-point pen.

Answer **all** questions.

Write your answers in the separate answer book provided.

Write your name, centre number and candidate number in the spaces at the top of the answer book.

INFORMATION FOR CANDIDATES

Each question carries **25** marks.

The number of marks is given in brackets at the end of each question or part-question.

You are reminded that assessment will take into account the quality of written communication used in your answers.

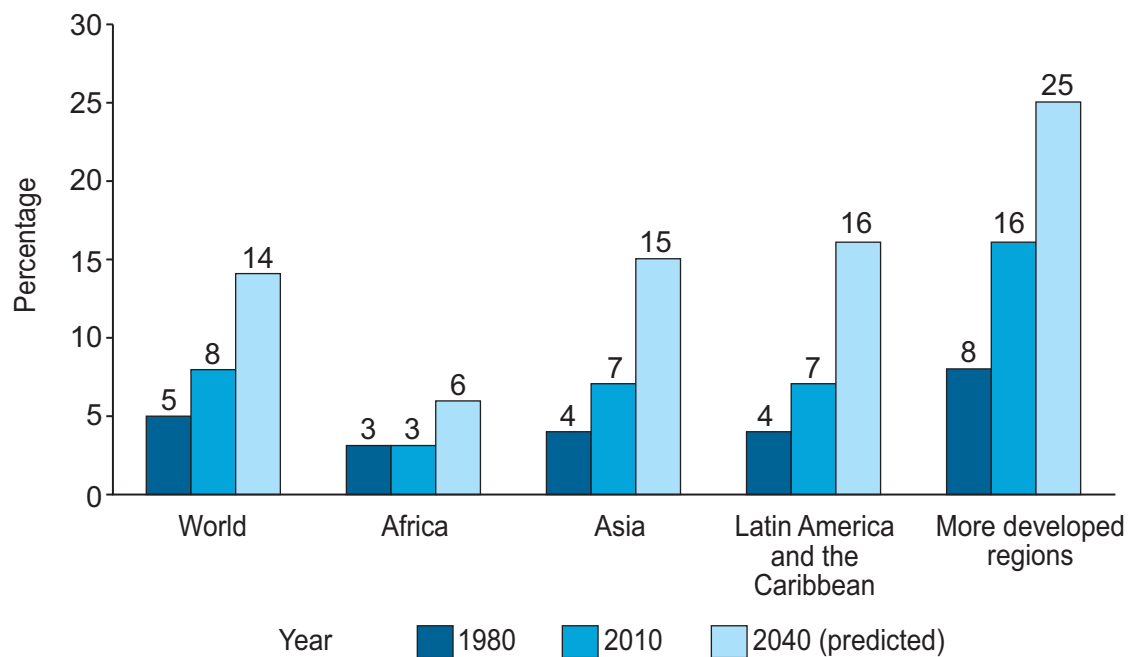
THIS PAPER REQUIRES THAT YOU MAKE THE FULLEST POSSIBLE USE OF APPROPRIATE EXAMPLES IN SUPPORT OF YOUR ANSWERS. SKETCH-MAPS AND DIAGRAMS SHOULD BE INCLUDED WHERE RELEVANT.

G2 – CHANGING HUMAN ENVIRONMENTS

Answer all questions.

Make the fullest possible use of examples in support of your answers.

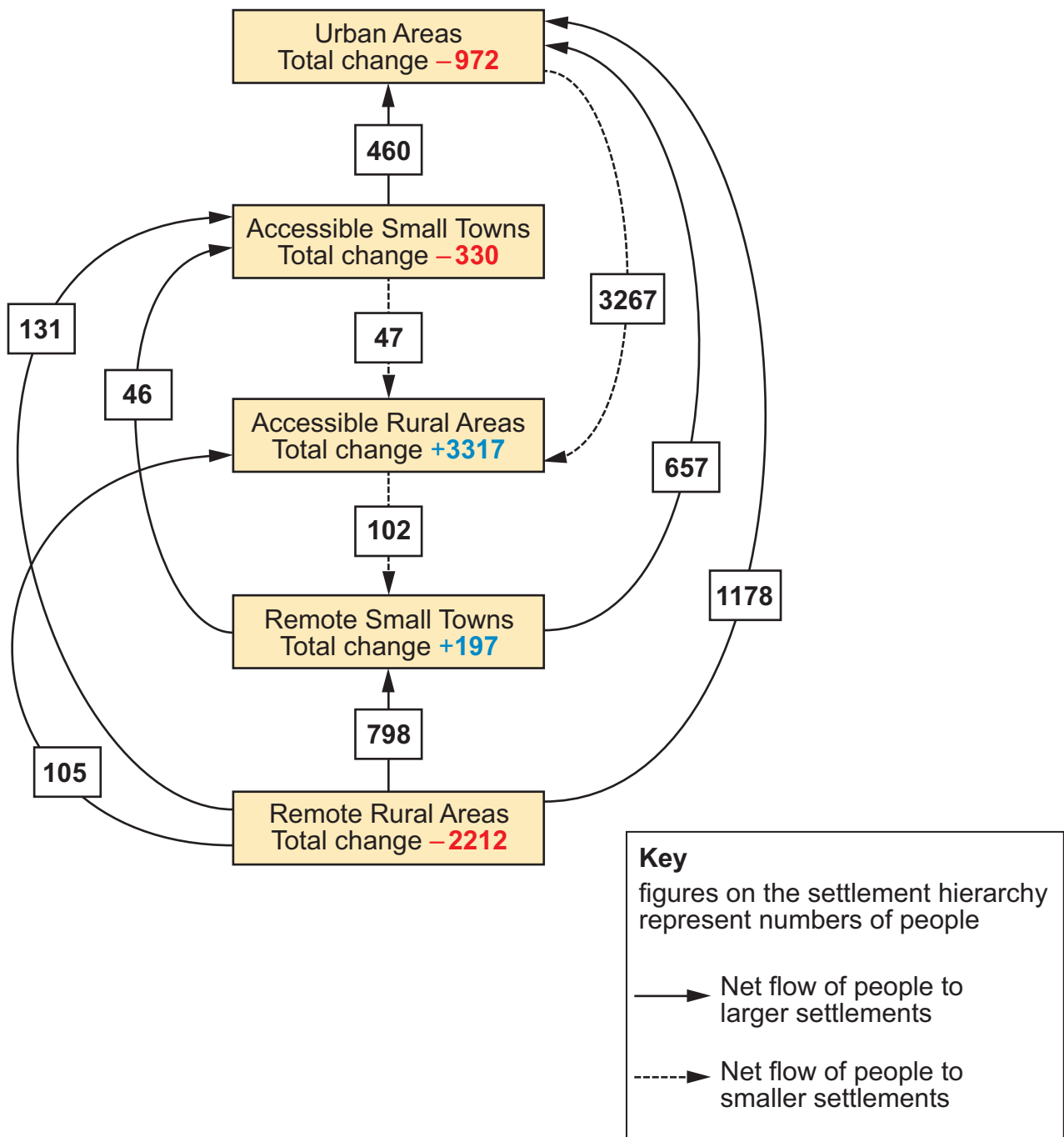
Figure 1: Percentage of population aged 65 years or more



Source: adapted from United Nations, World Population Prospects 2009

1. (a) Use **Figure 1** to describe changes in the percentage of population aged 65 years or more. [5]
- (b) Outline policies to tackle the demographic challenge of ageing societies. [10]
- (c) Explain why populations change over time. [10]

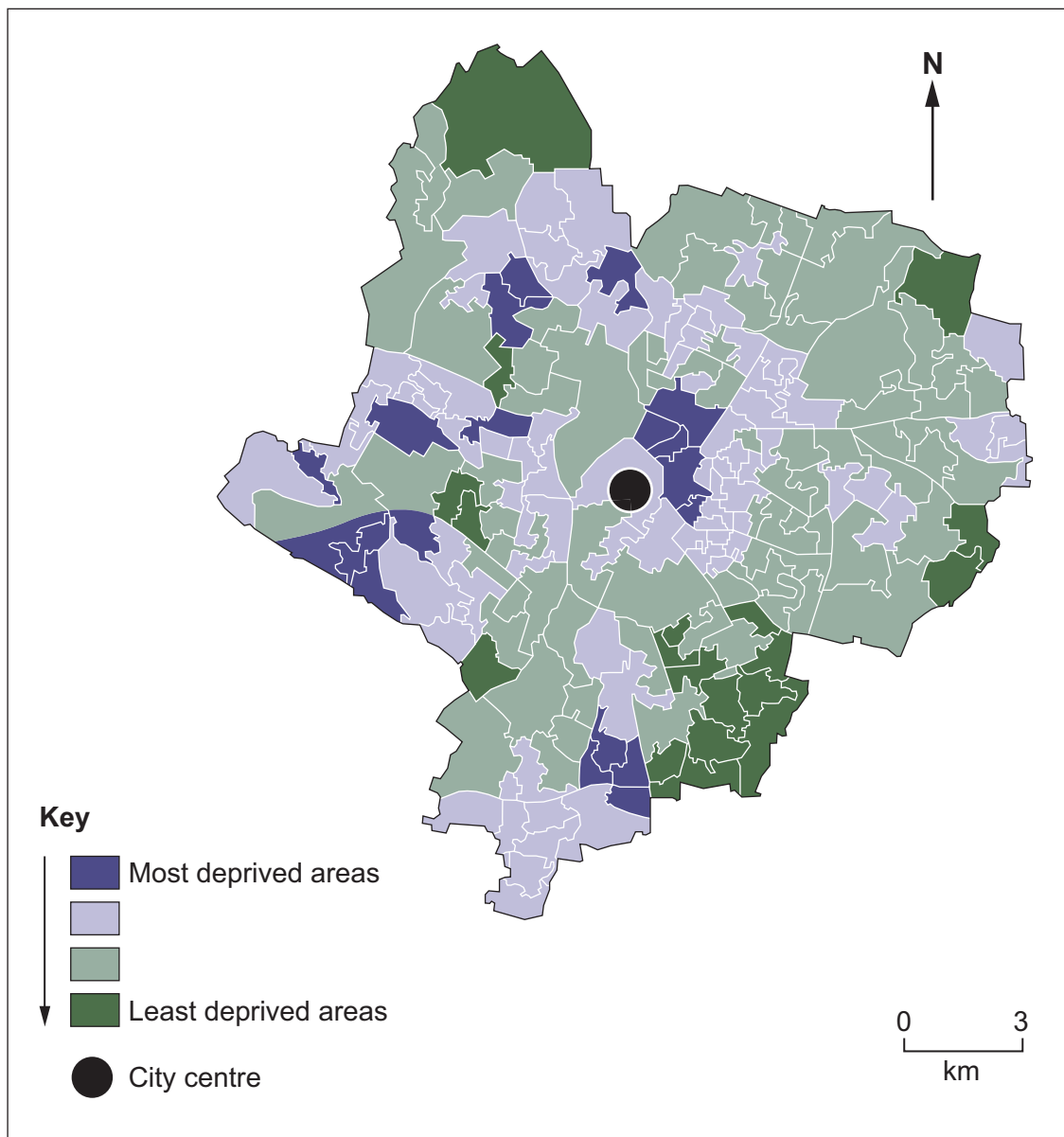
Figure 2: Population changes within the settlement hierarchy in Scotland in 2001



Source: adapted from www.macauley.ac.uk/economics

2. (a) Use **Figure 2** to describe changes within the settlement hierarchy in Scotland. [5]
- (b) Outline how the social profile of rural settlements is changing. [10]
- (c) Evaluate the success of an urban regeneration scheme. [10]

Figure 3: Multiple deprivation in the City of Leicester in 2010



Source: adapted from www.Isr-online.org/statistic
© Leicestershire County Council

3. (a) Use **Figure 3** to describe the pattern of multiple deprivation in the City of Leicester. [7]
- (b) Outline the advantages and limitations of the mapping technique used in **Figure 3**. [8]
- (c) Describe and explain how you planned your investigation into a changing human environment. [10]
- You should state clearly the question that you have investigated.*